

NCM (523) powder

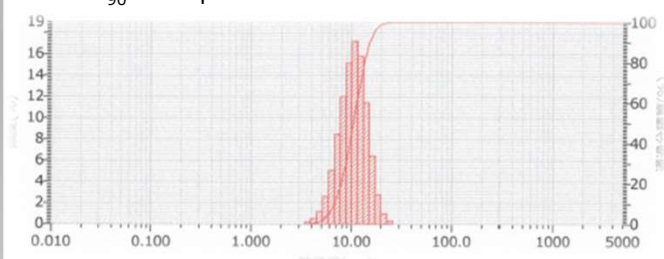
Product name	Composition	Main component composition (at ratio)				Particle diameter(μm)		
		Li	Ni	Co	Mn	D10	D50	D90
NCM523	$\text{LiNi}_{0.5}\text{Co}_{0.2}\text{Mn}_{0.3}\text{O}_2$	1.01	0.49	0.20	0.30	6.77	10.49	15.31

Impurity sample : ICP [ppm]

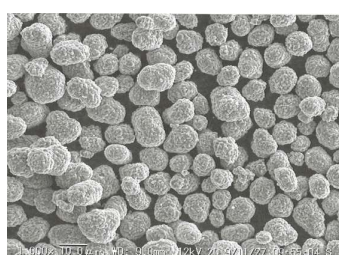
Al<30 , Ca<30 , Cr<5 , Mg<30 , Si<30 , Zn<2

Particle size distribution

D_{50} : 9.5-12.5μm
 D_{90} : \leq 25μm



SEM data

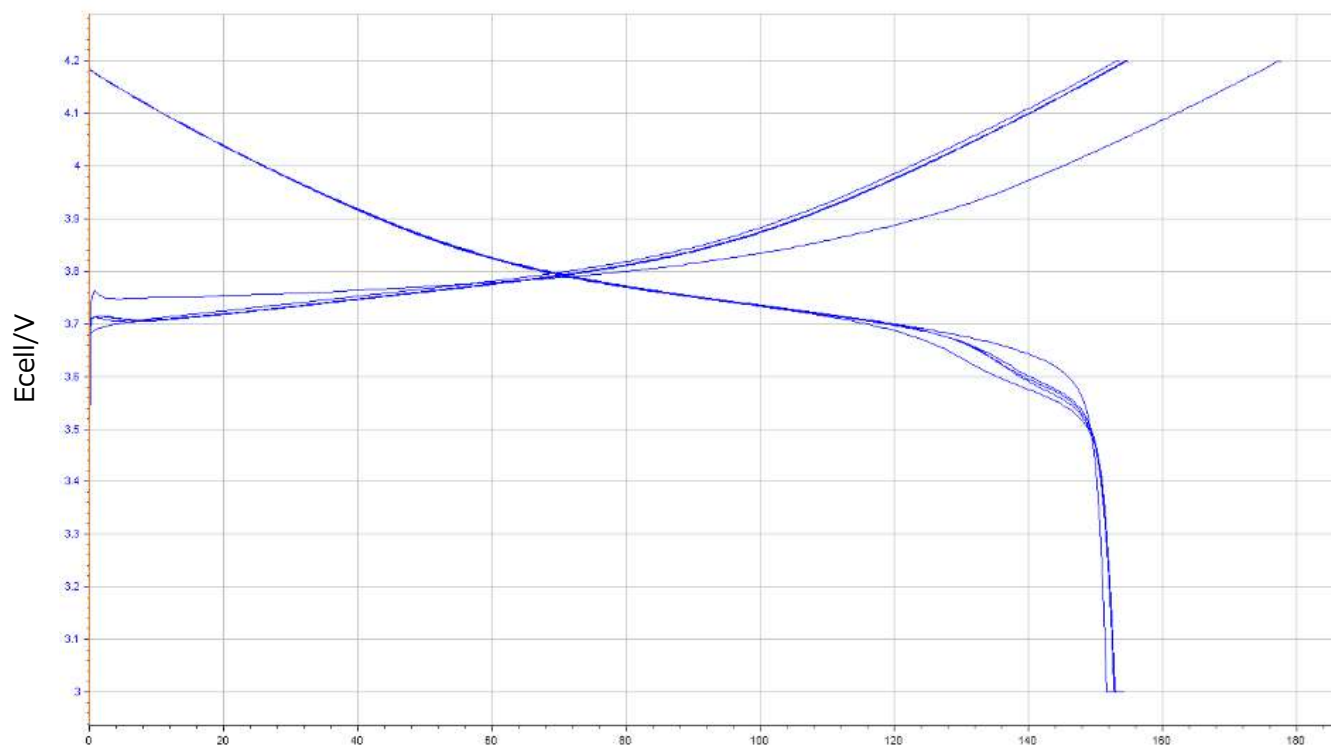


10μm



2μm

Charge-discharge curve



※For reference only.

TOSHIMA Manufacturing Co., Ltd.
 Materials system division

Toshima Manufacturing Co., Ltd.
 1414 Shimonomoto, Higashi-Matsuyama,
 Saitama, 355-0036 Japan
 TEL:+81-493-24-6774
 URL: <http://www.material-sys.com/global/>