

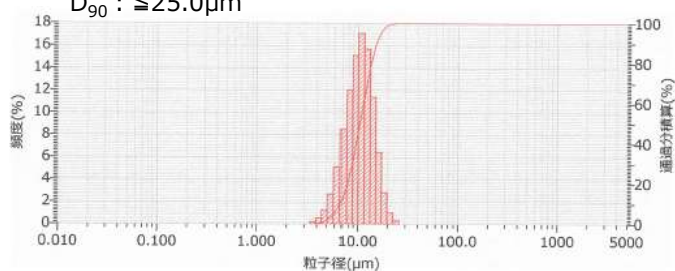
NCM (622) powder

Product name	Composition	Main component composition [at ratio]				Particle diameter(μm)		
		Li	Ni	Co	Mn	D10	D50	D90
NCM622	LiNi _{0.6} Co _{0.2} Mn _{0.2} O ₂	1.02	0.59	0.20	0.20	6.75	10.48	15.34

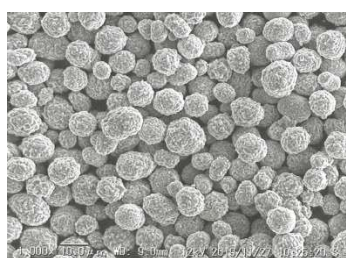
Impurity sample : ICP (ppm) Al<1200 , Ca<50 , Cr<5 , Mg<40 , Si<30 , Zn<2

Particle size distribution

D₅₀ : 9.0-12.0μm
D₉₀ : ≤25.0μm



SEM data

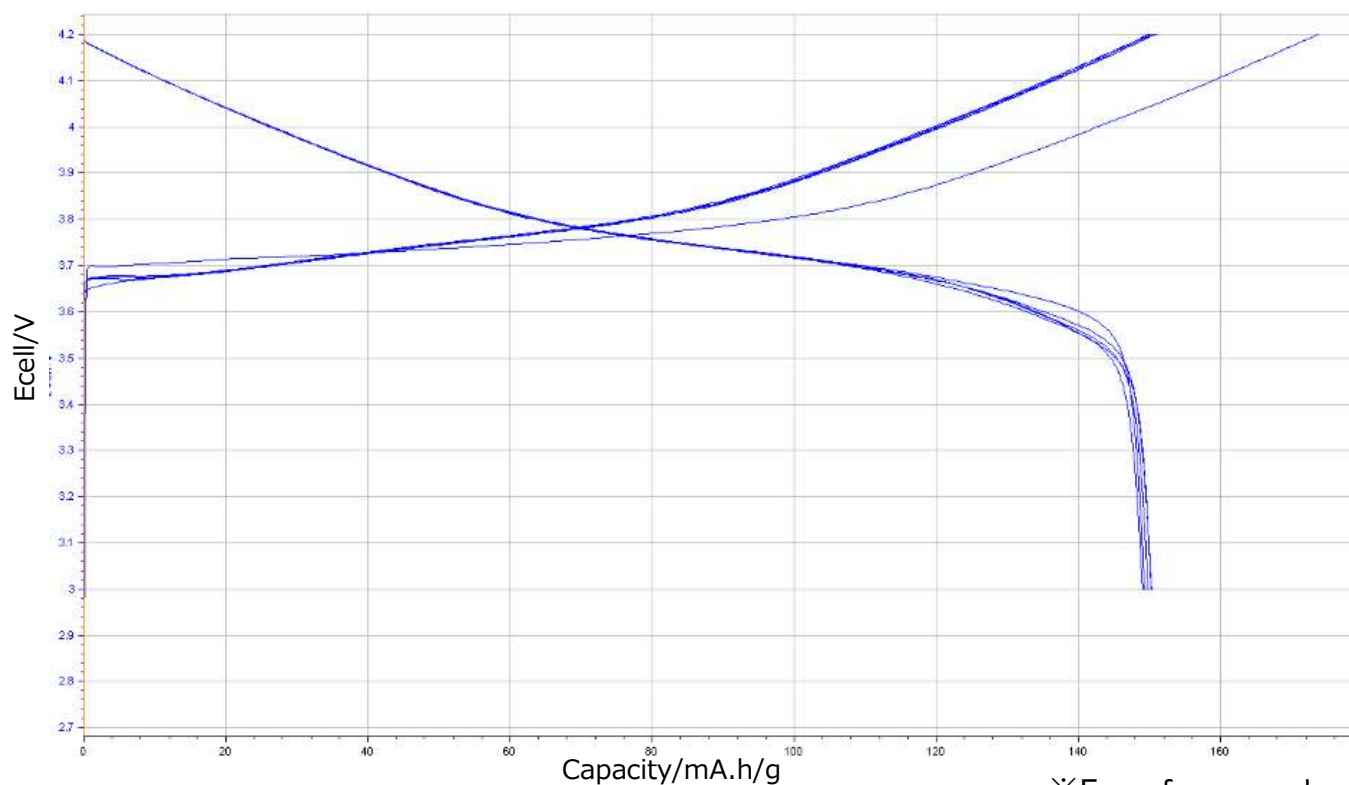


10μm



2μm

Charge-discharge curve



※For reference only.

TOSHIMA Manufacturing Co., Ltd.
Materials system division

Toshima Manufacturing Co., Ltd.
1414 Shimonomoto, Higashi-Matsuyama,
Saitama, 355-0036 Japan
TEL: +81-493-24-6774
URL: <http://www.material-sys.com/global/>