

NCM (811) powder

Product name	Composition	Main component composition (at ratio)				Particle diameter(μm)		
		Li	Ni	Co	Mn	D10	D50	D90
NCM811	$\text{LiNi}_{0.8}\text{Co}_{0.1}\text{Mn}_{0.1}\text{O}_x$	1.02	0.82	0.11	0.06	6.60	10.30	15.04

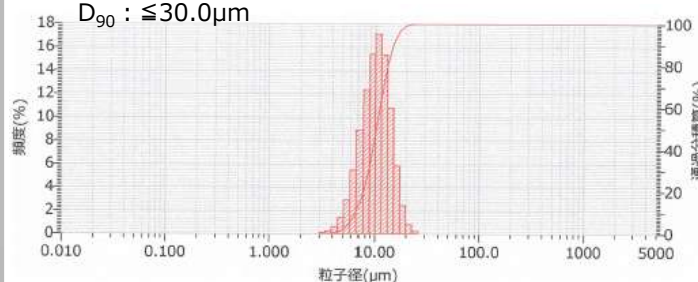
Impurity sample : ICP [ppm]

Al<1200 , Ca<30 , Cr<5 , Mg<40 , Si<20 , Zn<2

Particle size distribution

D₅₀ : 9.0-13.0μm

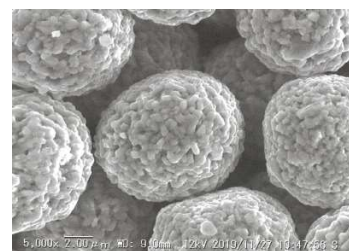
D₉₀ : ≤30.0μm



SEM data

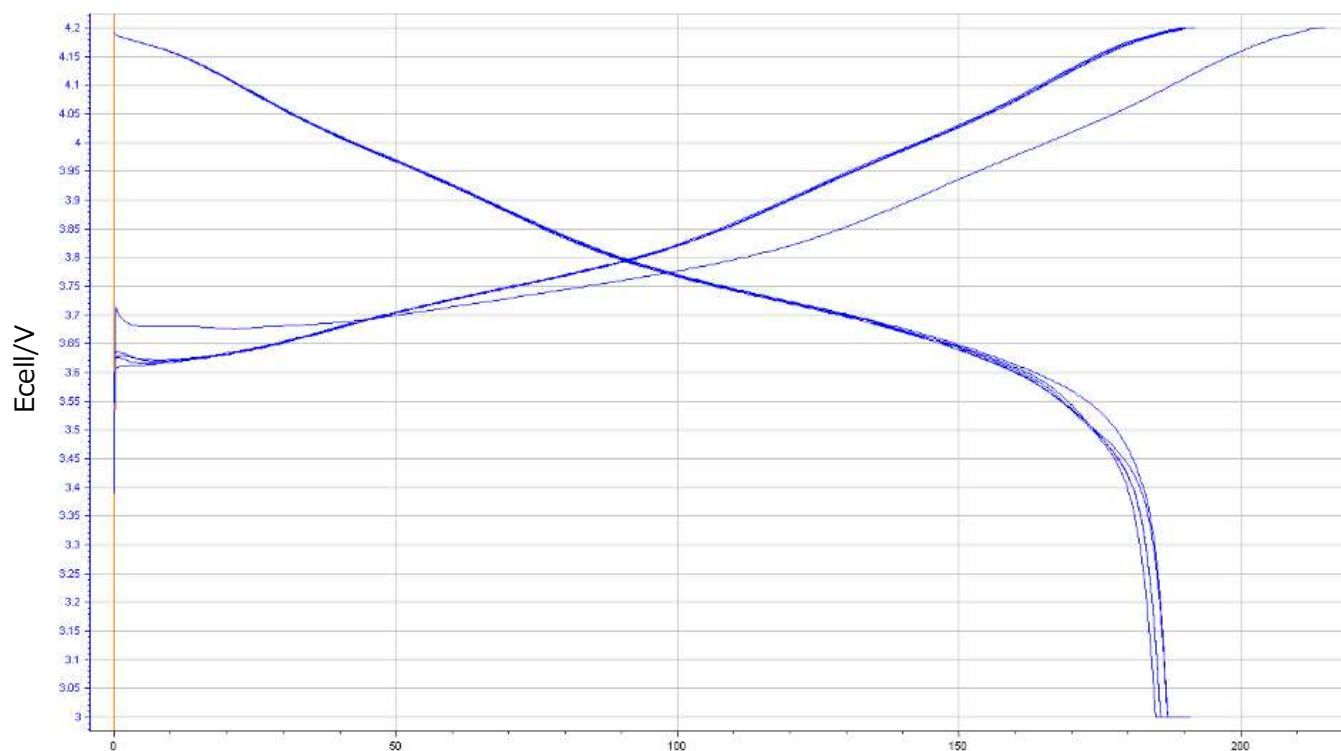


10μm



2μm

Charge-discharge curve



※For reference only.

TOSHIMA Manufacturing Co., Ltd.
Materials system division

Toshima Manufacturing Co., Ltd.
1414 Shimonomoto, Higashi-Matsuyama,
Saitama, 355-0036 Japan
TEL: +81-493-24-6774
URL: <http://www.material-sys.com/global/>