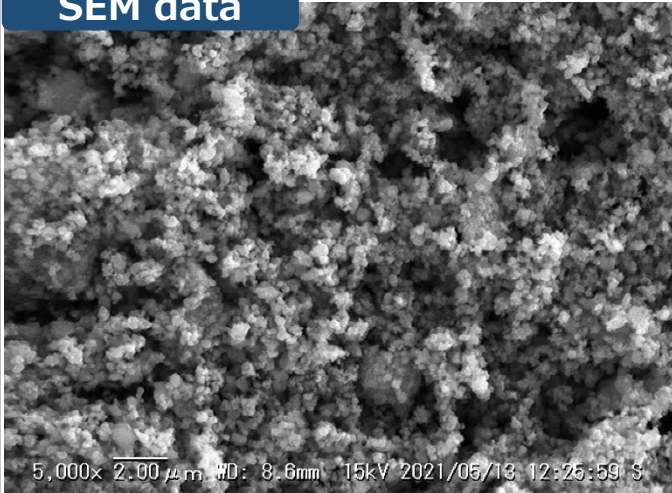


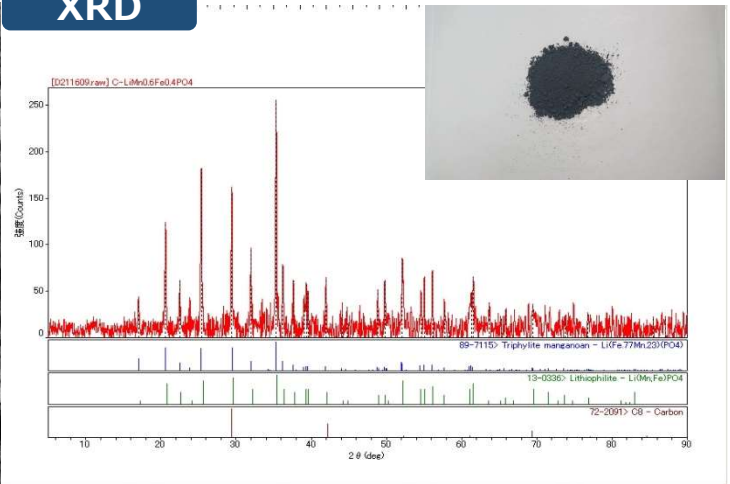
2C⁺LiMn_{0.6}Fe_{0.4}PO₄ powder

Product name	purity	Main component composition[at ratio]				Content of C [wt%]	Particle diameter[μm]			Typical capacity [mAh/g]	
		Li	Mn	Fe	P		D10	D50	D90	0.1C	0.2C
2C ⁺ LiMn _{0.6} Fe _{0.4} PO ₄	99.9%	1.01	0.56	0.43	0.99	around 2.00	0.243	3.473	14.369	152.2	143.4
Impurity ICP(ppm)						Al<50, Ca<100, Mg<80, Si<50, Ti<650, Zn<50 etc					

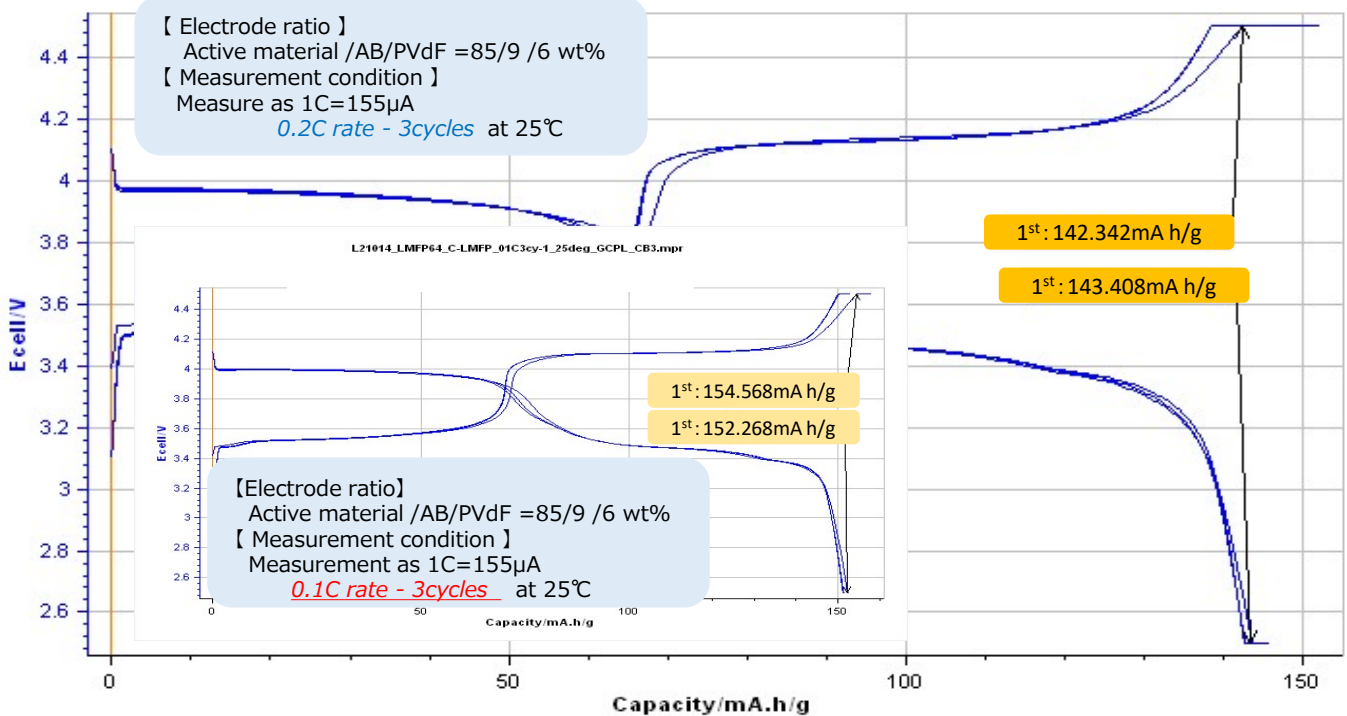
SEM data



XRD



Charge-discharge curve



※For reference only.