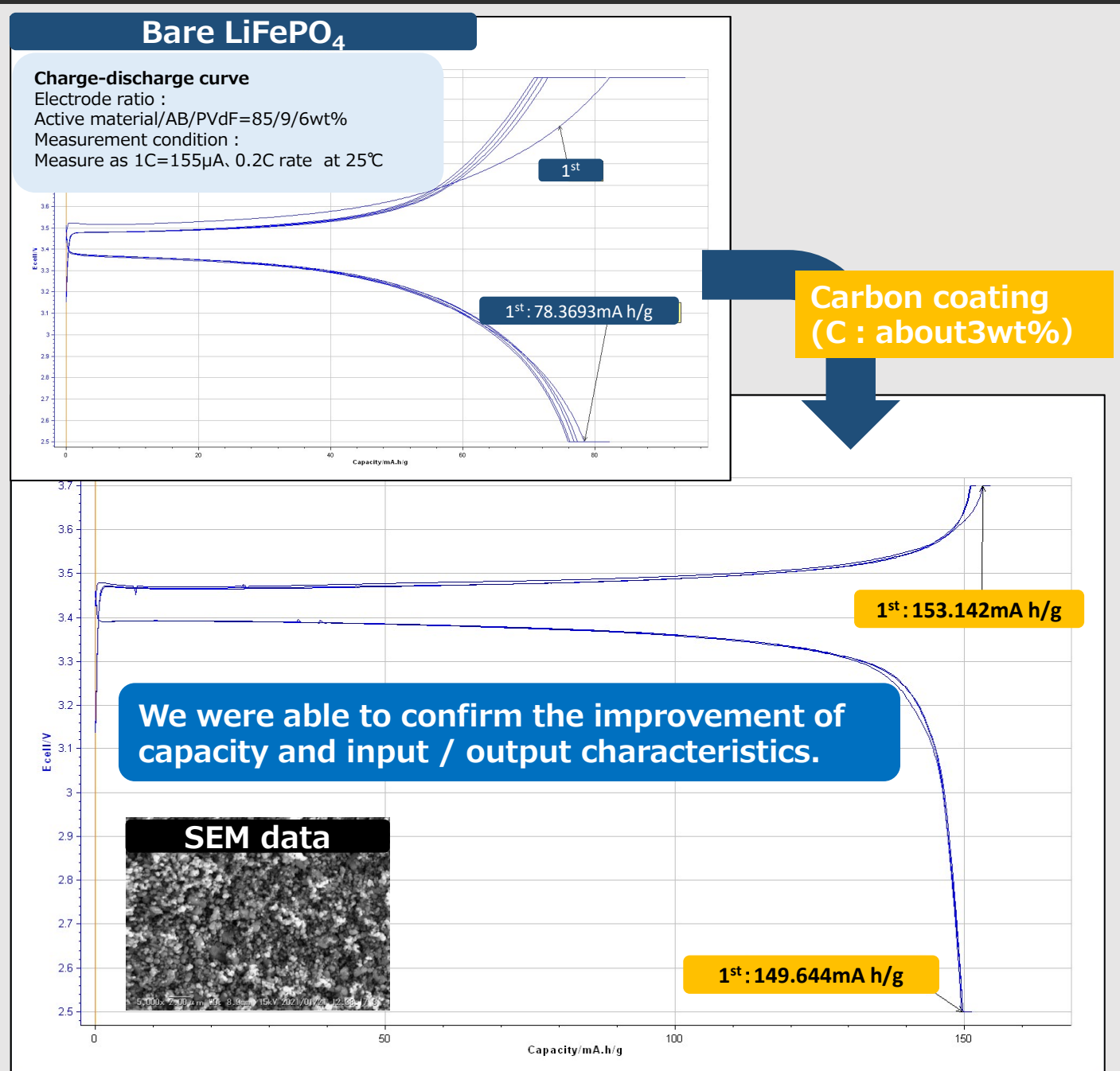


Contract processing of carbon coating

We accept contract processing of carbon coating on various and supplied material powders.
We will coat the provided material from a minimum of 100 grams.

[Reference case①] ~ Carbon coating on LiFePO₄ powder ~



※Some materials may not be available.

※This data is measured independently and the characteristics are not guaranteed.

TOSHIMA Manufacturing Co., Ltd.
Materials system division

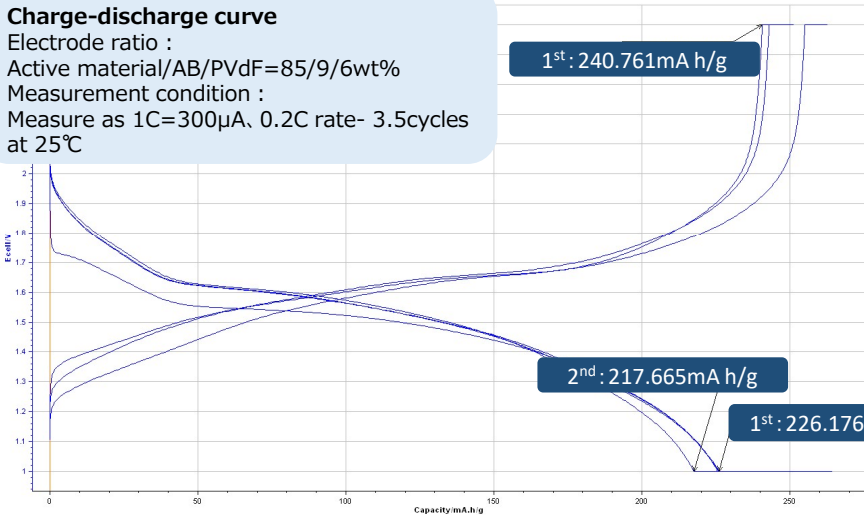
Toshima Manufacturing Co., Ltd.
1414 Shimonomoto, Higashi-Matsuyama,
Saitama, 355-0036 Japan
TEL: +81-493-24-6774
URL: <http://www.material-sys.com/global/>

【Reference case②】～ Carbon coating on TiNb2O7 powder ～

Bare TiNb2O7(D50<5μm)

Charge-discharge curve

Electrode ratio :
Active material/AB/PVdF=85/9/6wt%
Measurement condition :
Measure as 1C=300μA, 0.2C rate- 3.5cycles
at 25°C



SEM data(poeder)

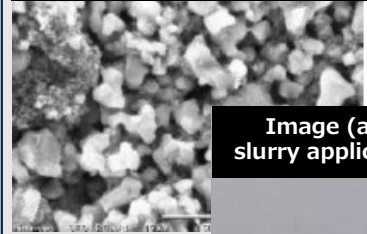


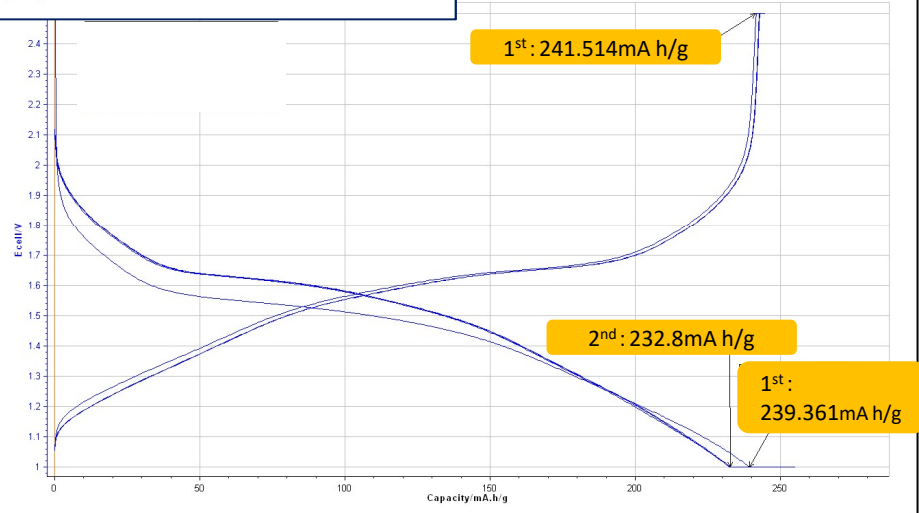
Image (after slurry application)

**Carbon coating
(C : abput5wt%)**

SEM data(powder)



Image (after slurry application)



We were able to confirm the improvement of capacity and input / output characteristics.

※Some materials may not be available.

※This data is measured independently and the characteristics are not guaranteed.

TOSHIMA Manufacturing Co., Ltd.
Materials system division

Toshima Manufacturing Co., Ltd.
1414 Shimonomoto, Higashi-Matsuyama,
Saitama, 355-0036 Japan
TEL: +81-493-24-6774
URL: <http://www.material-sys.com/global/>