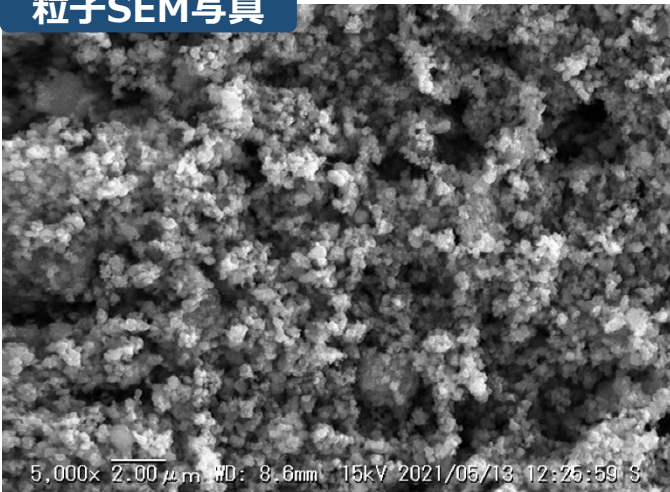


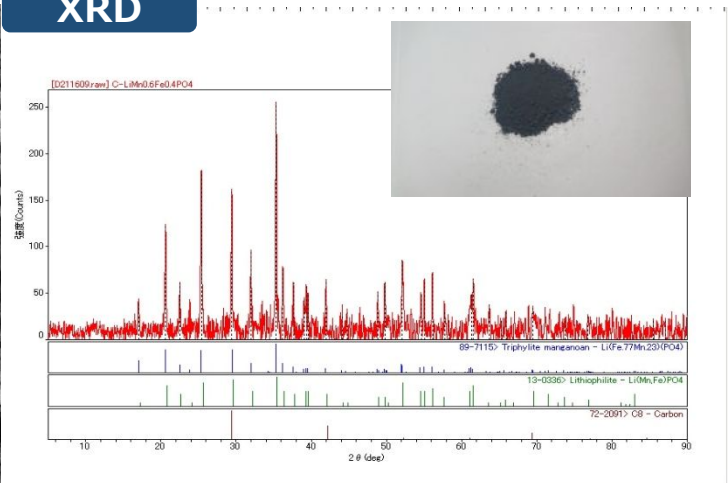
2C⁺LiMn_{0.6}Fe_{0.4}PO₄ powder

製品名	純度	主成分組成一例[at比]				C含有量 [wt%]	粒径一例[μm]			充放電容量代表値[mAh/g]	
		Li	Mn	Fe	P		D10	D50	D90	0.1C	0.2C
2C ⁺ LiMn _{0.6} Fe _{0.4} PO ₄	99.9%	1.01	0.56	0.43	0.99	around 2.00	0.243	3.473	14.369	152.2	143.4
		不純物一例 ICP[ppm]				Al<50, Ca<100, Mg<80, Si<50, Ti<650, Zn<50 etc					

粒子SEM写真



XRD



2C⁺LiMn_{0.6}Fe_{0.4}PO₄ 充放電曲線 (参考)

